

Armonie de forme tehnologice și improvizare nescută din îmbinarea a două sensibilități, Jazz este un uscător de prosoape extrem de funcțional. Formele sale nete și sobre sunt o expresie perfectă a tendințelor actuale. Disponibil în 3 variante de înălțime și 2 variante de lățime.



Jazz, înălțimea 1290 mm, lățimea 600 mm, Negru - RAL 9005

Caracteristici Tehnice

elemente din tablă dreptunghiulară de oțel 25x20 mm
colectoare pătrate din oțel 30x30 mm
filetarea extremității colectorului superior și inferior 1/2" G dx
presiunea maximă de lucru admisă 4 bar
temperatura maximă de lucru admisă 95°C
conexiune 50 mm

Standard equipment

4 console reglabile pentru fixarea pe perete, de aceeași culoare cu caloriferul
2 aerisitoare de 1/2" ascunse și elemente de acoperire

Plus



Date tehnice

Model	Depth (mm)	Height (mm)	Width (mm)	Conn. C. (mm)	Weight (kg)	Capacity (lt)	$\Delta t=60^{\circ}\text{C}$ (Watt)	$\Delta t=50^{\circ}\text{C}$ (Watt)	$\Delta t=40^{\circ}\text{C}$ (Watt)	$\Delta t=30^{\circ}\text{C}$ (Watt)	$\Delta t=20^{\circ}\text{C}$ (Watt)	Exponent	mixed oper. (Watt)
DX													
890 18 țevi 2 spații	67,0	890	500	50	10,10	4,40	544,0	438,0	336,0	239,0	147,0	1,189	400
1290 28 țevi 2 spații	67,0	1290	500	50	15,40	6,70	794,0	636,0	485,0	342,0	209,0	1,216	400
1290 28 țevi 2 spații	67,0	1290	600	50	17,40	7,80	913,0	731,0	557,0	392,0	239,0	1,219	700
1770 38 țevi 3 spații	67,0	1770	500	50	20,90	9,10	1.075,0	859,0	653,0	458,0	278,0	1,231	700
1770 38 țevi 3 spații	67,0	1770	600	50	23,60	10,60	1.208,0	961,0	727,0	507,0	305,0	1,253	1000
SX													
890 18 țevi 2 spații	67,0	890	500	50	10,10	4,40	544,0	438,0	336,0	239,0	147,0	1,189	400
1290 28 țevi 2 spații	67,0	1290	500	50	15,40	6,70	794,0	636,0	485,0	342,0	209,0	1,216	400
1290 28 țevi 2 spații	67,0	1290	600	50	17,40	7,80	913,0	731,0	557,0	392,0	239,0	1,219	700
1770 38 țevi 3 spații	67,0	1770	500	50	20,90	9,10	1.075,0	859,0	653,0	458,0	278,0	1,231	700
1770 38 țevi 3 spații	67,0	1770	600	50	23,60	10,60	1.208,0	961,0	727,0	507,0	305,0	1,253	1000

(*) Grație prestațiilor ridicate ale corpurilor încălzitoare Irsap Jazz, se consideră ideale pentru proiectarea la joasă temperatură un Δt la 30°C

Randamentul este calculat în fază de certificare. Putere calculată cu Δt 60°C . Pentru $\Delta t \neq 60^{\circ}\text{C}$ utilizați formula: $Q=Q_n (\Delta t / 60)^n$

Standard equipment

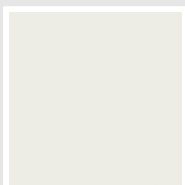
- 4 console reglabile pentru fixarea pe perete, de aceeași culoare cu caloriferul
- 2 aerisitoare de 1/2" ascuse și elemente de acoperire

Packing

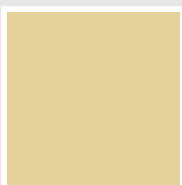
Atenția pe care Irsap o rezervă fiecărui calorifer se manifestă și în grija pentru ambalaj. Fiecare produs este protejat de un material antișoc care previne zgârieturile și deteriorările accidentale pe parcursul transportului sau a manipulării pe șantier. Toate ambalajele trebuie colectate și reciclate conform legislației în vigoare.

Colori e finisaje

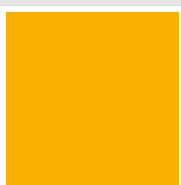
CLASSIC



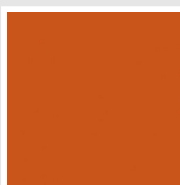
Bianco Edelweiss
Cod. 34



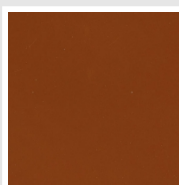
Beige Cream
Cod. 26



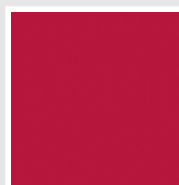
Giallo Melone - RAL
1028
Cod. E7



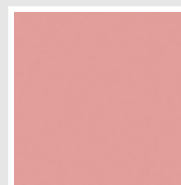
Arancio - RAL 2004
Cod. 17



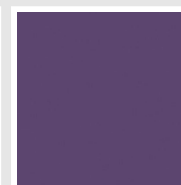
Marrone Ruggine -
RAL 8004
Cod. E1



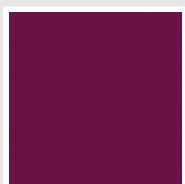
Rosso Fragola - RAL
3018
Cod. Y3



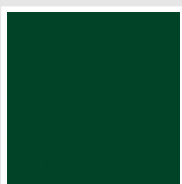
Rosa - RAL 3015
Cod. R2



Lilla Bluastro - RAL
4005
Cod. R3



Porpora Traffico -
RAL 4006
Cod. R6



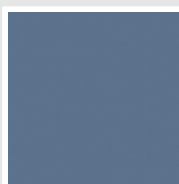
Verde Bosco - RAL
6005
Cod. 19



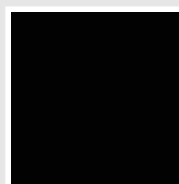
Verde Erba - RAL
6018
Cod. N3



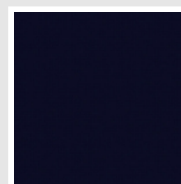
Verde Salvia - RAL
6021
Cod. E6



Blu Pastello - RAL
5024
Cod. G7

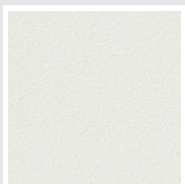


Nero - RAL 9005
Cod. 10

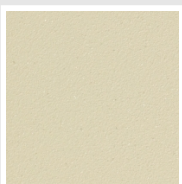


Deep Blue
Cod. 2F

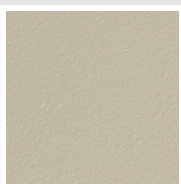
SPECIAL



Bianco Perla
Cod. 16



Quartz 1
Cod. 1C



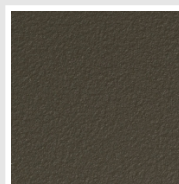
Sablé
Cod. Y4



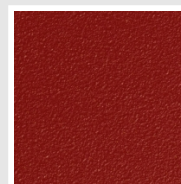
Quartz 2
Cod. 2C



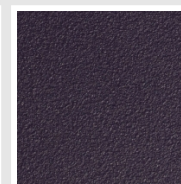
Sunstone
Cod. 2D



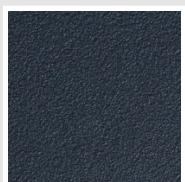
Bruno Tabacco
Cod. 1B



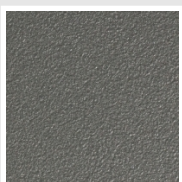
Flame Red
Cod. 7D



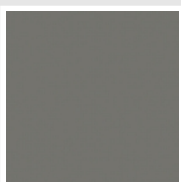
Purple Blue
Cod. 1D



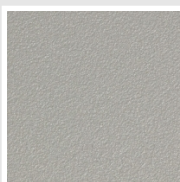
Azurite 3
Cod. 6C



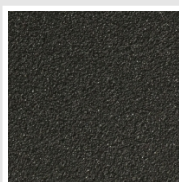
Grigio Medio
Cod. 4D



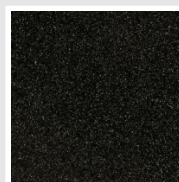
Grigio Titanio
Metallizzato - RAL
9023
Cod. L3



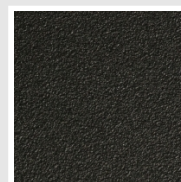
Grigio Perla
Cod. L6



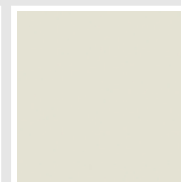
Nero Grafite
Cod. 18



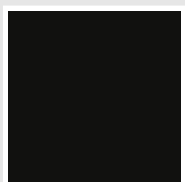
Grigio Quarzo
Cod. 31



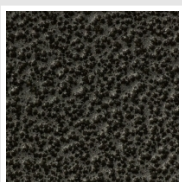
Nero Satinato
Cod. 30



Bianco Opaco
Cod. J8



Nero Opaco
Cod. K1



Grigio Martellato
Cod. 32



Rame Martellato
Cod. J4

SURFACES



Trattamento Loft
Cod. TR

The Colors used in this folder are not considered binding. The different technological painting processes and the materials used for the realization can not have a perfect color match with the delivered product. Irsap company reserves the right to introduce at any time whatever modifications necessary to the improvement of the product.